

LOT 115 GEORGE ALBERT DRIVE, TRARALGON

TURN-KEY | TITLED LAND

**\$779,000**

**V.I.P**

EXCLUSIVE OFFER

**VIRTUE INCLUSIONS PACKAGE**

\$10,000 LANDSCAPING ALLOWANCE

FISHER & PAYKEL 4-DOOR FRIDGE

FISHER & PAYKEL WASHING MACHINE

FISHER & PAYKEL HEAT PUMP DRYER

3M X 3M COLORBOND GARDEN SHED  
(INCLUDING THE SLAB)

SAMSUNG THE FRAME QLED 55-INCH TV

WEBER BBQ

VALUED AT OVER \$25,000

T&Cs APPLY

**DISCLAIMER** Must sign an unconditional contract. Whitegoods will be installed in the home upon completion. Products included in the packages cannot be changed or removed from the house and land price. The VIP offer is now available for the House & Land Package at Lot 115 George Albert Drive, Traralgon. The VIP offer starts on 1st September 2024 and is only applicable to house and land packages that commence construction from this date onwards. The landscaping allowance is subject to the terms and conditions outlined in the contract. The value of the package is based on the retail price of the included items at the time of the offer.

# MARSHALL 28

## ALL NEW FAMILY FRIENDLY LIVING

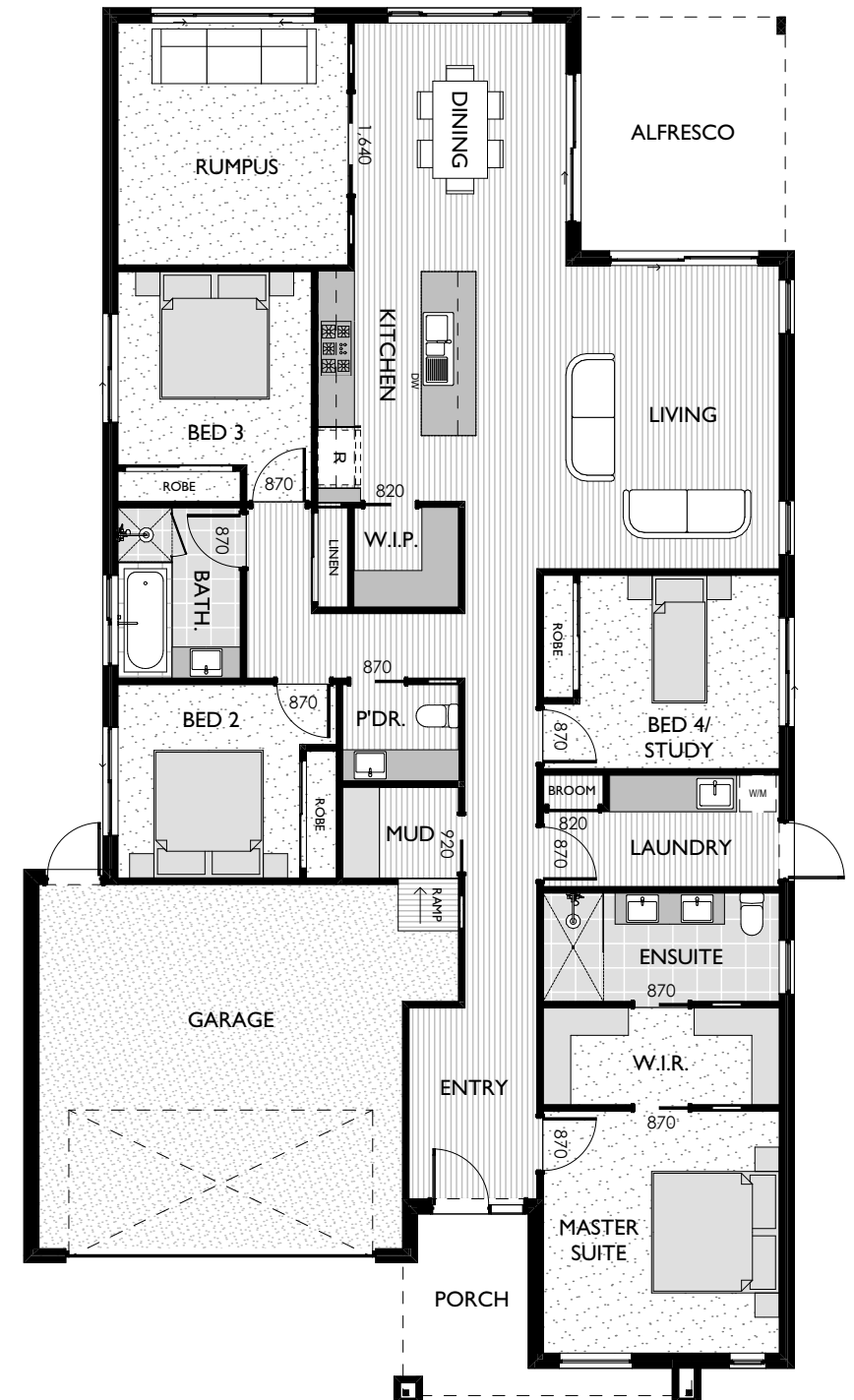
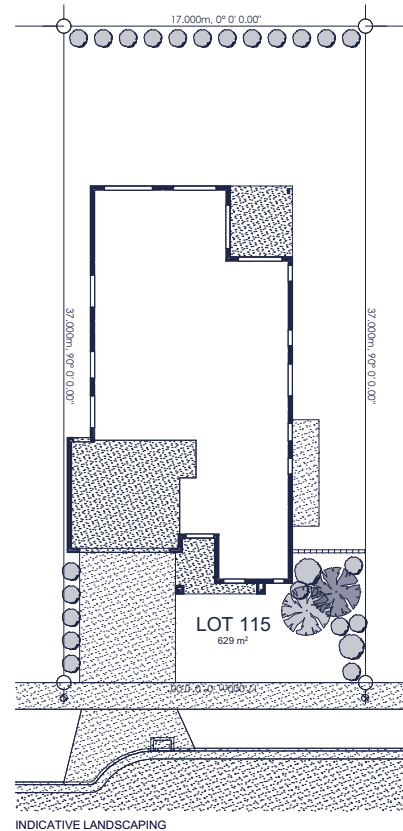


Living	3990 x 5000
Dining	3500 x 4100
Kitchen	2610 x 3790
Rumpus	3800 x 4000
Master Suite	3900 x 4000
Bed 2	3010 x 3200
Bed 3	3200 x 3200
Bed 4/Study	3300 x 3200
Garage	6000 x 6000
Alfresco	3510 x 4000

Measurements in mm

Exterior Length	22.99m
Exterior Width	12.68m
Living	193.50m <sup>2</sup> / 20.83 SQ
Garage	42.32m <sup>2</sup> / 4.55 SQ
Alfresco	14.04m <sup>2</sup> / 1.51 SQ
Porch	8.05m <sup>2</sup> / 0.87 SQ
House Area Total	257.91m <sup>2</sup> / 27.76 SQ

Refer to working drawings for complete dimensions



ABN 78 107 165 588 | CDB U48113

Virtue Homes Pty Ltd | P.O. Box 1589/ 41-45 Standing Drive Traralgon VIC 3844  
(03) 5176 5997 | sales@virtuehomes.com.au | www.virtuehomes.com.au