

AYDEN 29

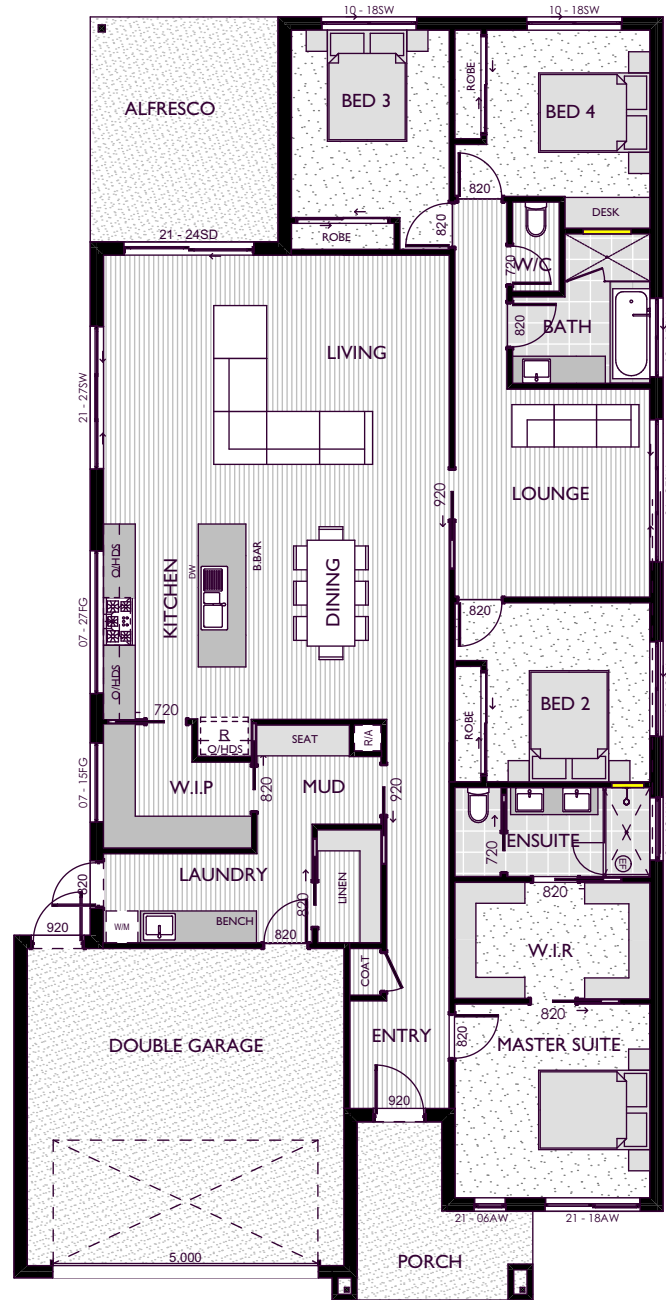
 | 4
  | 2
  | 2
  | 14m

Living	6550 x 5090
Dining	3850 x 3700
Kitchen + W.I.P.	5980 x 2700
Lounge	3950 x 3700
Master Suite	3680 x 3700
Bed 2	3400 x 3100
Bed 3	3560 x 3000
Bed 4	3160 x 3100
Garage	6000 x 6000
Alfresco	4250 x 3550

Measurements in mm

Exterior Length	24.24m
Exterior Width	12.26m
Living	201.08m ² / 21.64 SQ
Garage	40.53m ² / 4.36 SQ
Alfresco	15.09m ² / 1.62 SQ
Porch	8.76m ² / 0.94 SQ
House Area Total	265.46 ² / 28.56 SQ

Refer to working drawings for complete dimensions.



MIN. LOT WIDTH

14m