

BROOKLYN 37 V-2

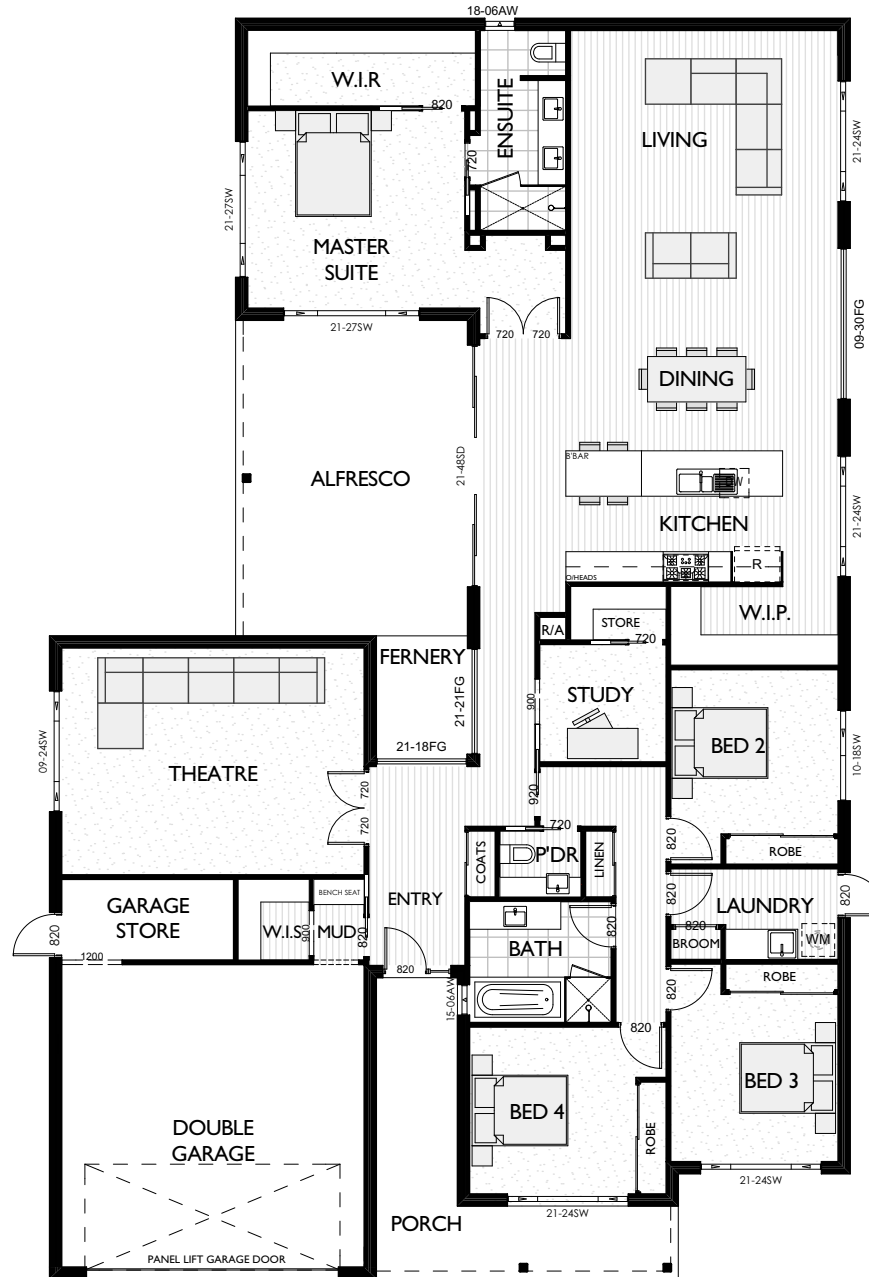
 | 4
  | 2
  | 2
  | 17.8m

| | |
|------------------|-------------|
| Living | 6110 x 5310 |
| Dining | 2230 x 5310 |
| Kitchen + W.I.P. | 4250 x 5400 |
| Theatre | 4500 x 6000 |
| Study | 2330 x 2510 |
| Master Suite | 3920 x 4310 |
| Bed 2 | 3260 x 3320 |
| Bed 3 | 3320 x 3320 |
| Bed 4 | 3310 x 3300 |
| Garage | 6000 x 6000 |
| Alfresco | 6260 x 4600 |

Measurements in mm

| | |
|------------------|---------------------------------|
| Exterior Length | 25.50m |
| Exterior Width | 15.80m |
| Living | 249.26 ² / 26.83 SQ |
| Garage | 46.48m ² / 5.00 SQ |
| Alfresco | 33.05m ² / 3.56 SQ |
| Porch | 15.92m ² / 1.71 SQ |
| House Area Total | 344.71m ² / 37.11 SQ |

Refer to working drawings for complete dimensions.



MIN. LOT WIDTH
17.8m