

SAVILLE 27 V-2

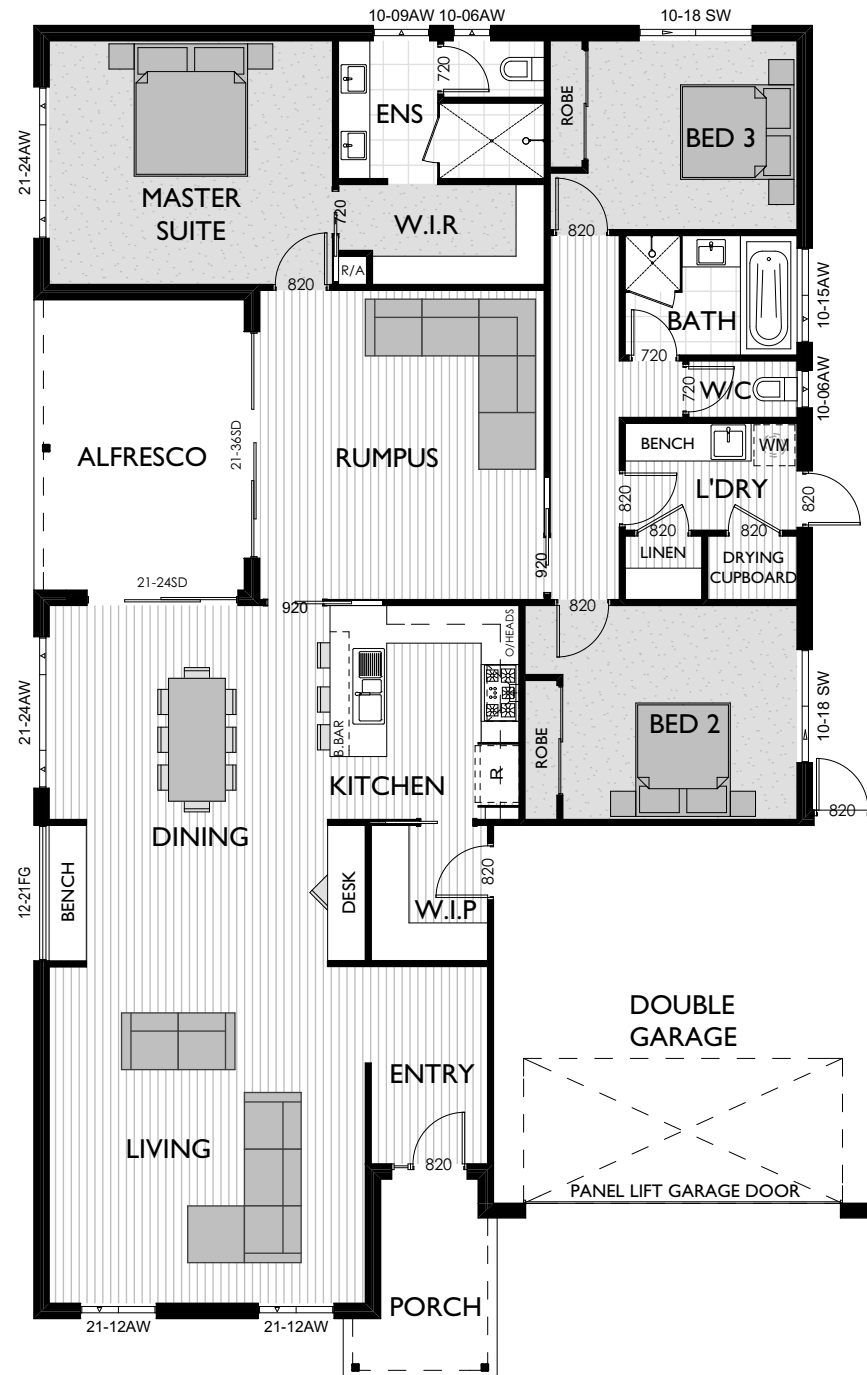
 3
  2
  2
  14.7m

Living	5340 x 5020
Dining	3400 x 4420
Kitchen + W.I.P.	5640 x 3000
Rumpus	4910 x 4520
Master Suite	3870 x 4500
Bed 2	3400 x 3720
Bed 3	3000 x 3320
Garage	6000 x 6000
Alfresco	4610 x 3340

Measurements in mm

Exterior Length	19.5m
Exterior Width	13.5m
Living	194.57m ² / 20.94 SQ
Garage	39.29m ² / 4.23 SQ
Alfresco	15.26m ² / 1.64 SQ
Porch	6.88m ² / 0.74 SQ
House Area Total	255.40m ² / 27.49 SQ

Refer to working drawings for complete dimensions.



MIN. LOT WIDTH

14.7m

© COPYRIGHT. REPRODUCTION IN ANY FORM EITHER IN WHOLE OR PART IS FORBIDDEN. VIRTUE HOMES HAS THE RIGHT TO ALTER OR IMPROVE THESE PLANS WITHOUT NOTICE. ALL IMAGES USED ARE FOR ILLUSTRATIVE PURPOSES ONLY AND ARE ARTIST'S IMPRESSIONS. PLEASE REFER TO ACTUAL WORKING DRAWINGS FOR COMPLETE DIMENSIONS. VIRTUE HOMES PTY LTD ABN 78 107 165 588. REGISTERED BUILDING PRACTITIONER DBU 23132

Please note: this floor plan is only available within the Latrobe Valley