

Langford 39

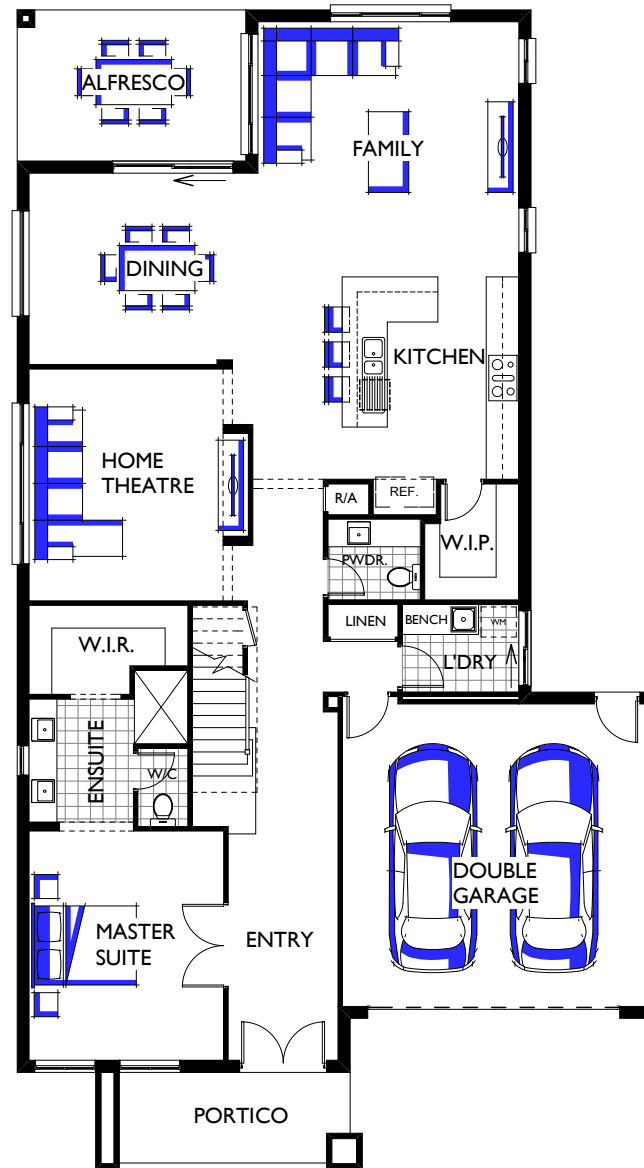
 | 4
  | 2
  | 2
  | 14.1

Family	5180 x 5000
Dining	4540 x 3800
Home Theatre	3850 x 4600
Rumpus	6130 x 4240
Master Suite	3860 x 4550
Bed 2	3150 x 3550
Bed 3	3150 x 3550
Bed 4	3100 x 3470
Study	3200 x 3500
Garage	6000 x 6000
Alfresco	4540 x 3000

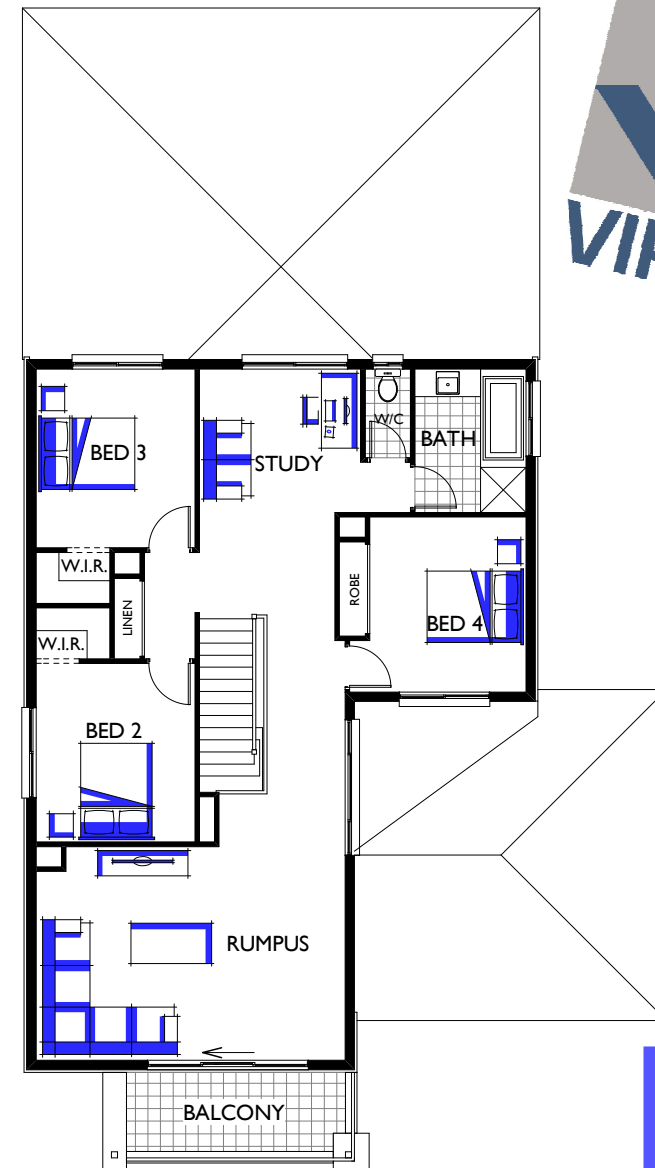
Measurements in mm

Exterior Length	23.01m
Exterior Width	12.70m
Ground Floor Living	172.87m ² / 18.61 SQ
First Floor Living	116.17m ² / 12.50 SQ
Garage	40.99m ² / 4.41 SQ
Alfresco	13.62m ² / 1.47 SQ
Portico	8.24m ² / 0.89 SQ
Balcony	8.47m ² / 0.91 SQ
House Area Total	360.36m ² / 38.79 SQ

Refer to working drawings for complete dimensions.



GROUND FLOOR



FIRST FLOOR

